



EAGL Technology, Inc.



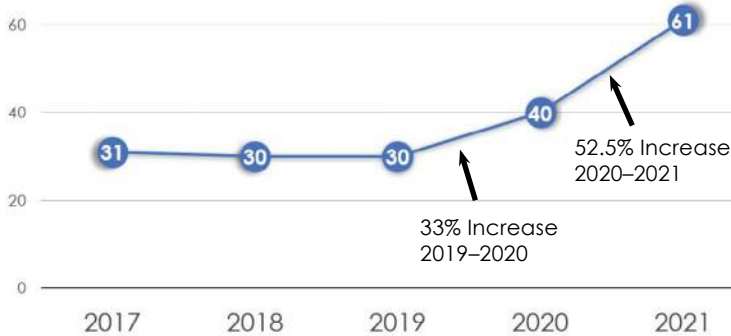
©EAGL Technology, Inc. All Rights Reserved

The Public Safety Solutions Provider

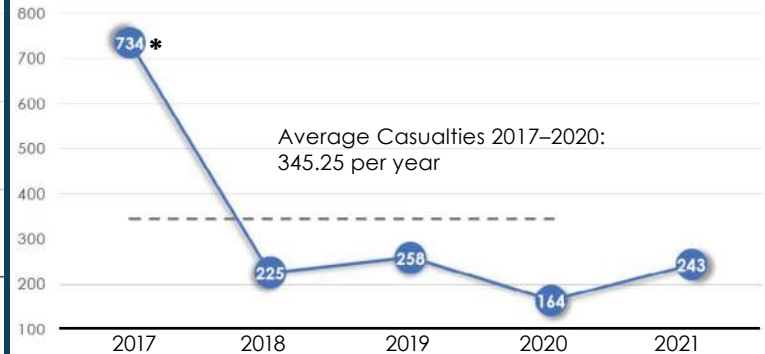
ACTIVE SHOOTER INCIDENTS IN THE UNITED STATES 2017-2021

A Cost Effective Solution to Counter A REAL-WORLD REALITY! Problem/Statistics A New Normal

Incident Statistics Active Shooter Incidents 2017-2021



Active Shooter Incidents 2017-2021 Total Casualties



*The Route 91 Harvest Festival shooting impacts the 2017 casualty count (56 killed, 489 wounded).

2021 Active Shooter Incidents Summaries



Commerce: 32



Education: 2



Government: 3



Open Space: 19



Residence: 3



House of
Worship: 1



Health Care: 1



Other: 0

Industries We Serve

EDUCATION

TRANSPORTATION

PUBLIC SAFETY

CRITICAL INFRASTRUCTURE

HEALTHCARE

HOUSES OF WORSHIP

GOVERNMENT

ENERGY & MANUFACTURING

TRANSPORTATION



ENERGY & MANUFACTURING



PUBLIC SAFETY



EDUCATION



HEALTHCARE



HOUSES OF WORSHIP



GOVERNMENT



CRITICAL INFRASTRUCTURE



The EAGL System can also serve other venues such as Telecommunications, Agriculture, Financial Services, Commerce, Open Space Public Areas, Entertainment (Sports, Complexes, Theaters, Casinos) Military, Law Enforcement, & Fire Services.

The EAGL System

During an active shooter event, the Emergency Automatic Gunshot & Lockdown (EAGL) System uses the newest gunshot technology to: (1) identify, analyze, and validate firearm discharges, (2) perform “Adaptive Response” functions and, (3) perform Notification features. All of these are accomplished automatically and autonomously without the need for a monitoring center or third-party interaction! This structure provides rapid and immediate action for reporting validated incidents to law enforcement agencies and affected on-site parties while independently providing access control functionality designed to minimize threat movement on facility or open space property. Also, EAGL System validation thresholds for detection analysis minimize the potential for event false positive misinterpretation - all without any reporting time delay!

The EAGL System also has integration capabilities to include interfacing with existing: Video, PA and wide area warning, audio and visual other systems using an open API architecture. This allows the EAGL System to either become the facility’s overall security umbrella or become an integral part of an existing security system.



Additionally, no audio is recorded for either non-threat or threat events. All event data is logged and automatically becomes the property of the system owner.



EAGL System Components



DragonFly™ Outdoor Sensor

- Rated for outdoor applications
- Transmits and receives encrypted wireless data
 - Battery operated



EAGL System Control Unit

- IT Rack, 2U Drawer
- Connects to LAN/WAN and ethernet ports
- Integrates with access control, video surveillance & visual/audible warning systems



Panic Station

- Allows human intervention and when the station is operated, a signal representing a threat is sent to the EAGL server.



FireFly® Indoor Sensor

- Rated for indoor applications
- Transmits and receives encrypted wireless data
 - Battery operated



Indoor/Outdoor Gateway

- Rated for indoor/outdoor applications
- Connects to EAGL server via ethernet (POE)
- Communicates wireless with FireFly® and DragonFly™ sensors

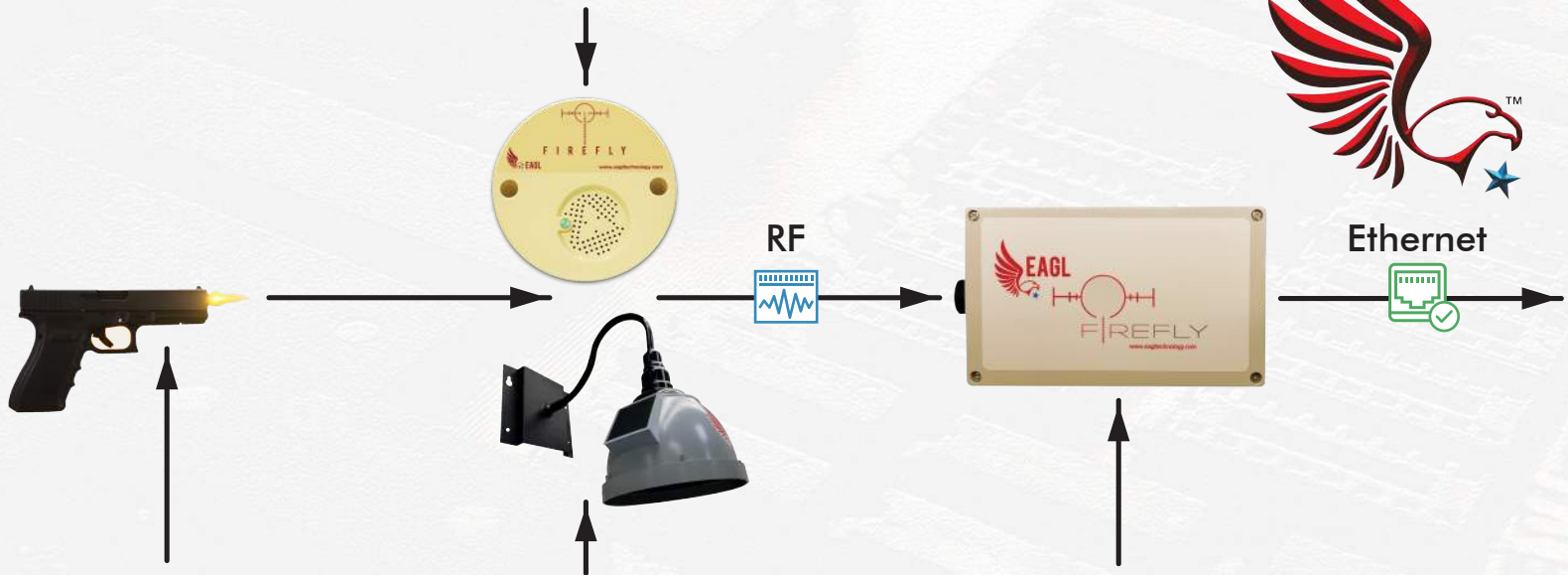


BlueFly™

- Battery operated
- The BlueFly™ is an accurate, body-worn gunshot detection sensor

EAGL System Operation Chart

The Sensor validates captured energy after the detection event meets threat thresholds. The sensor then sends data that includes threat waveform samples to gateway unit via encrypted wireless RF transmission for additional processing by the EAGL System.



Sensor analyzes the acoustics events and performs threat vs. non-threat analysis.

The EAGL System can use several sensor varieties based upon application, the indoor and outdoor types are presented here.

Gateway sends validated sensor data to the EAGL System server via direct ethernet connection for further analysis.

System Operation Chart Cont.

The EAGL System is customizable allowing the ability to send notifications (such as active shooter event info, email/text and GPS location) to assigned individuals.



EAGL System notification features include providing law enforcement with active shooter event info, live stream video, email/text, via multiple communication platforms.

The EAGL System performs additional waveform analysis to determine weapon type & initiates preprogrammed adaptive responses for access control & notifications with real-time video streaming features when the event "Dual-Validation" process is completed.

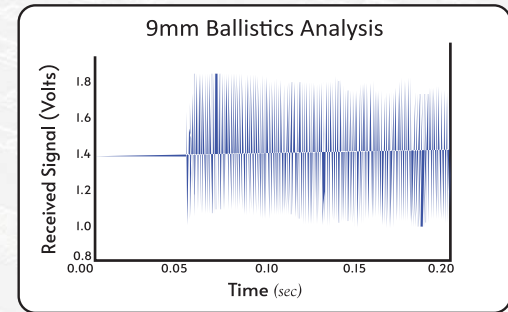
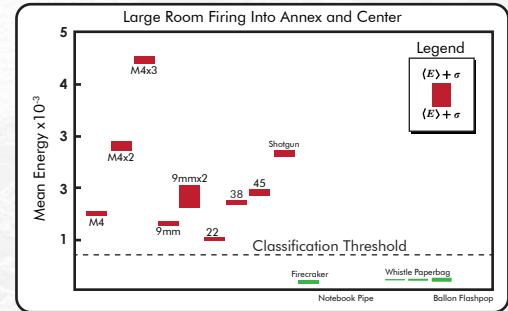
The EAGL System can also be integrated with aural, strobe or other lighting systems to increase event situational awareness.

FireFly[®] Indoor Sensor

The FireFly[®] uses the newest technology for gunshot detection!

FireFly[®] was developed by the Department of Energy in response to the Sandy Hook tragedy. This patented technology is like no other gunshot detection technology in the industry.

This FireFly[®] technology uses advanced algorithms to analyze firearm discharge event energy levels & waveforms, performing threat validation before wirelessly transmitting this data to the EAGL server for adaptive response launch.



All equipment uses zero false read “Dual-Validation” techniques for threat assessment verification preventing false alarm conditions!

DragonFly™ Outdoor Sensor

The DragonFly™ sensor technology began first by using a design like the original FireFly® indoor sensor. However, due to major acoustic challenges which present themselves between indoor and outdoor environments, a new solution needed development for the outdoor application using drastically unique sensor technology.

This sensor is encapsulated within a resonance chamber specifically designed to enhance both acoustic acquisition technique and detection range. Unobstructed detection coverage is spherical with an area covering 70,685 ft².

The DragonFly™ also is available in an IoT format or model for deployment in areas having little if any supporting infrastructure. Both power and network accessibility are possible using self-contained components within the sensor!

A variety of mounts are available allowing the sensor to be rigidly attached to a: flat wall, corner, or pole. These mounts offer deployment flexibility and provide a stable sensor platform.



New **EAGL** System Additions



DragonFly™ X

Compact, wireless, self-contained, battery operated gunshot sensor executing threat versus non-threat validation analysis using energy waveform algorithms. Sensor contained within resonance chamber allowing flat wall, corner or pole mounting capability while providing an optimum spherical detection coverage area up to ~282,743 FT². Threat validation data is wirelessly transmitted via IoT.

10



EAGL Vape

EAGL-Vape is a device for monitoring indoor air quality and capable of sensing Volatile Organic Compounds (VOCs), equivalent carbon dioxide (eCO₂), and suspended particulate matter (PM₁₀). The EAGL Vape Detector continuously routes area air samples over internal components comprised of multiple metal-oxide (MOX) sensor elements. Another internal component uses light scattering and measurement techniques to detect and measure particulates associated with conventional tobacco use and vaping products.



EAGL Vox

EAGL-VOX uses Power Over Ethernet (POE) communication with either a local or cloud based EAGL Server and contains components within an enclosure having an IP67 rating. Enclosure is of a polycarbonate composition and a polyurethane gasketed lid offering two-piece "tongue & groove" design. This construct provides protection against oil, dust and water intrusion while housing internal components.



TransitFly

TransitFly, is a hardwired, on-board, vehicle sensor providing automatic gunshot detection, GPS location, panic button functionality and vehicle collision reporting capability in real time. This lifesaving device links wirelessly to designated networks using IoT, cloud based functionality. Device integrates with fleet tracking technologies.

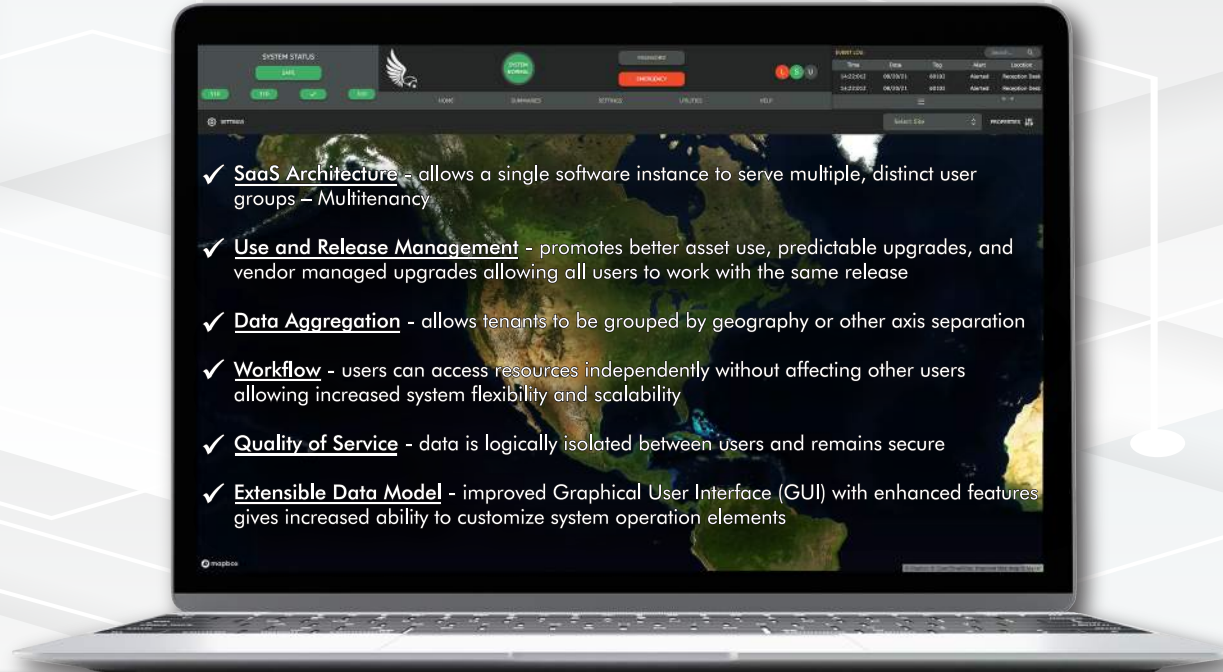
EAGL System Key Features

- ✔ Provides automated access control integration through adaptive response programming and performs complete facility lockdown. Exit/Egress is always possible.
- ✔ Preprogrammed notification actions are automatically performed during all active shooter events without any human intervention by supplying critical, real-time information to law enforcement, local security, facility management and enrolled occupants via e-mail, text and phone.
- ✔ Allows live video streaming access via the EAGL Graphical User Interface (GUI).
- ✔ Supplies critical information to law enforcement & facility managers enabling appropriate and immediate actions during events to promote optimal outcomes.
- ✔ Integrates with most public address and wide area warning systems for threat alerts.
- ✔ Performs ballistic analysis and distributes determination regarding weapon type: handgun vs. rifle vs. shotgun.
- ✔ Indoor and outdoor sensors are all wireless, promoting installation cost & time economy with system scalability while offering options to provide protection at single-site or multiple locations all having unique adaptive response configurations.
- ✔ Can integrate with most wide area warning, public address, CCTV, fire & security systems offering real-time full facility security under one umbrella to alert occupants of potential threat conditions.
- ✔ EAGL system allows client access to event data, without additional cost.



(GUI) Graphical User Interface

Introducing the new EAGL Emergency Management System 4.0!



- Browser based
- Does not require stand alone software
- Provides google map satellite views
- Displays site map floor overlays

- Displays system status
- Displays asset location & status
- Adaptive response, and event log
- Access control status

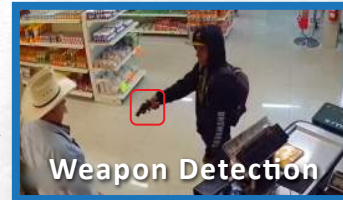
- Markers for all assets (Sensor, Cameras, Locks, etc.)
- Provides better event awareness

Adaptive Response



Intelligent Multilayer Countermeasure Algorithm Generator!

Each Sensor (or group of sensors) or Duress button can be selected to activate a specific Adaptive Response action.



DragonFly™ Xtreme



Duress Button



FireFly® Indoor Sensor



DragonFly™ Outdoor Sensor



Panic Station



BlueFly™ Sensor



Gateway



EAGL Server



Graphical User Interface (GUI)



Mobile Application Input



BlueFly



Analog Input



Lockdown

Access control integration
Identifies specific doors/door
groups to lock out threat.



911 Call & Phone Messages

Assigns 911 messages to
designated phone numbers.



PA Message Board

Assigns messages to
PA/Mass notification systems.



**Human
Intervention**



Building Location

Specifies building
description/address
for message response.



Notifications

Selects the specific customized
messages for use with response.
(Email and Text)



Message Groups

Select recipients who
are enrolled to receive
critical event details.



VIP Conference



Video Stream

Assigns cameras to
specific sensors.



Relay Board

Designates relays for
analog integration with
local systems.



External Systems Integration

Everbridge - Prowatch
Genetech - CAD.



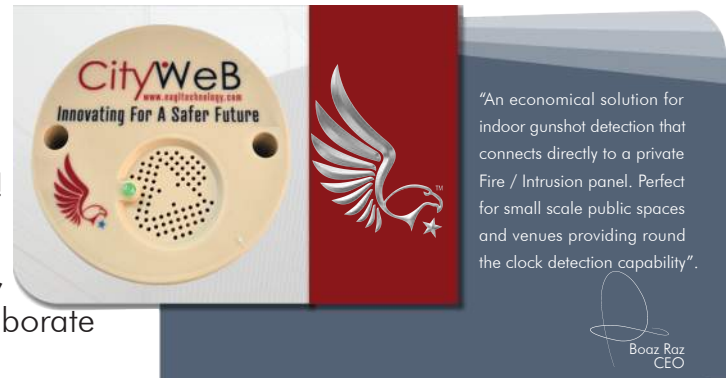
CityWeb

Innovating for a Safer Future



The **CityWeb** Indoor Sensor can be programmed into most privately owned burglar alarm systems to autonomously monitor for firearm discharge events. Provides immediate delivery of gunshot reporting to local Law Enforcement 24/7!

CityWeb concept is based on a public / private partnership, where local law enforcement and private companies collaborate to promote public safety in their neighborhoods.



"An economical solution for indoor gunshot detection that connects directly to a private Fire / Intrusion panel. Perfect for small scale public spaces and venues providing round the clock detection capability".

Boaz Raz
CEO

EAGL Remote Site Deployment

EAGL ASSET DEPLOYMENT

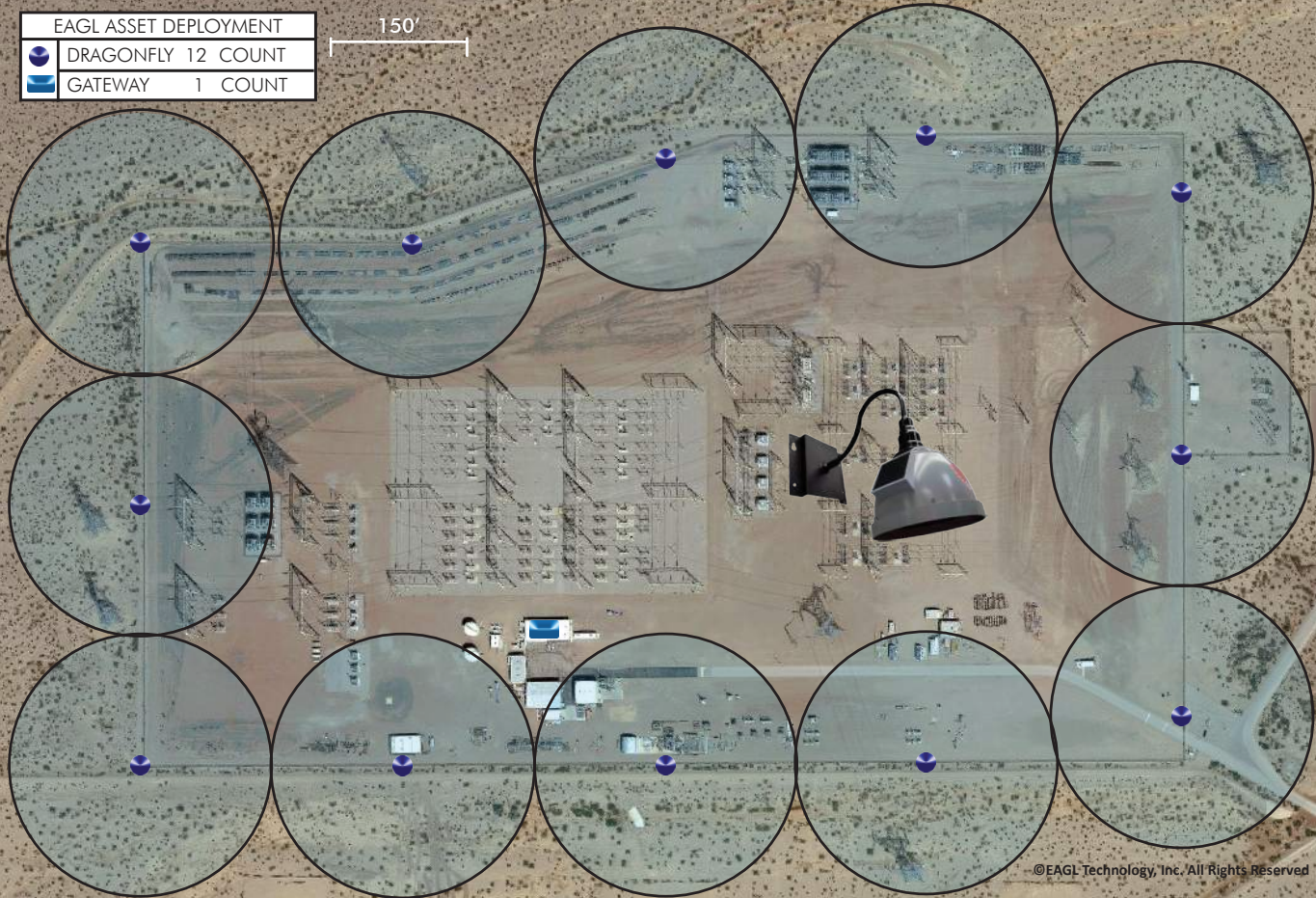


DRAGONFLY 12 COUNT



GATEWAY 1 COUNT

150'





EAGL Technology Equipment has Safety Act Certification.
Awarded ASTORS Platinum Award Winner for 5 years running!



Phone: (877) 566-1700 Office: (505) 323-0294 Fax: (505) 332-1705
3821 Singer Blvd NE Albuquerque, NM 87109